

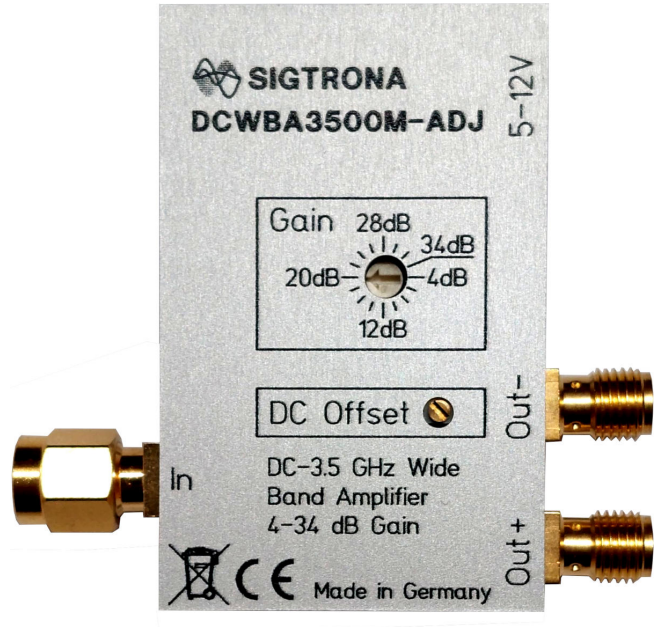
Digitally Adjustable DC-Coupled Wideband Amplifier

Features

- Adjustable gain: +4 to +34 dB in 2 dB steps
- DC coupled
- Bandwidth 3.5 GHz
- 5–12 V supply (USB-C plug)
- Adjustable DC output offset (± 1 V range)
- Differential output
- $50\ \Omega$ input and outputs
- Compact size: $32 \times 50 \times 14$ mm

Typical Applications

- PMT (photo multiplier tube) pulse amplifier
- General purpose signal amplification
- Automated test equipment (ATE)

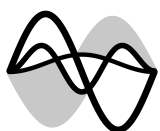


General Description

The Sigtrona DCWBA3500M-ADJ is a wideband, DC-coupled amplifier with digitally adjustable gain. Its wide gain range of +4 to +34 dB, combined with an adjustable DC output offset, makes it suitable for a broad range of applications. The device features differential outputs, providing both inverted and non-inverted versions of the signal. Power is supplied via a USB-C connector, and the amplifier accepts input voltages from 5 to 12 V, enabling straightforward integration into OEM systems.

Variants and Order Codes

- **DCWBA3500M-ADJ-F**: Female SMA input connector, female SMA output connectors.
- **DCWBA3500M-ADJ-M**: Male SMA input connector, female SMA output connectors.



Sigtrona GmbH

Im Thal 10,
82377 Penzberg, Germany
web: www.sigtrona.com
e-mail: info@sigtrona.com

The information provided in this data sheet is believed to be accurate and reliable. However, no responsibility is assumed for its use, for inaccuracies and omissions, nor for any infringements of patents or other rights of third parties that may result from its use. Prices and specifications are subject to change without notice. Trademarks and registered trademarks are the property of their respective owners.

Contents

1 Specifications 3

1.1 Electrical and Environmental Characteristics 3

1.2 Gain Graphs 4

1.3 Mechanical Dimensions 4

2 Connections and Operation 5

1 Specifications

1.1 Electrical and Environmental Characteristics

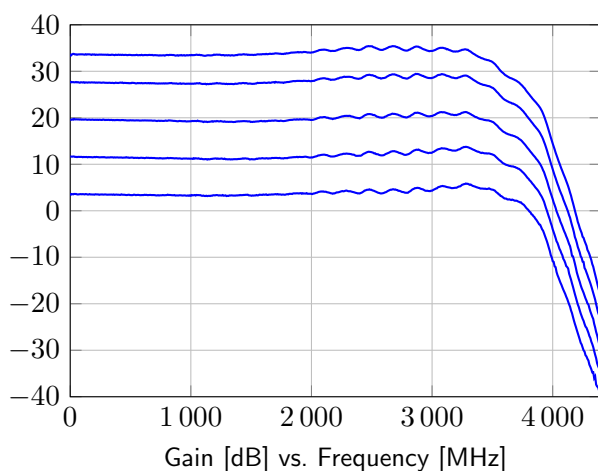
Parameter	Conditions	Min	Typ	Max	Units
DC Characteristics					
Supply Voltage (V_S)	Via USB-C connector	4.5	12	14	V
Supply Current	$V_S = 5\text{ V}$???		mA
	$V_S = 12\text{ V}$???		mA
AC Characteristics					
Bandwidth	Gain 4 dB, Flatness $\pm 1.5\text{ dB}$		3 500		MHz
	Gain 20 dB, Flatness $\pm 1.5\text{ dB}$		3 500		MHz
	Gain 34 dB, Flatness $\pm 1.5\text{ dB}$		3 500		MHz
Rise Time	Gain 20 dB (computed)		100		ps
Signal Gain	Gain 4 dB, $f=2\text{ GHz}$	3	4	6	dB
	Gain 20 dB, $f=2\text{ GHz}$	19	20	22	dB
	Gain 34 dB, $f=2\text{ GHz}$	33	34	36	dB
Input Noise Density ¹	Gain 34 dB, DC–1 GHz		1.4		nV/ $\sqrt{\text{Hz}}$
Input Characteristics					
Input Impedance			50		Ω
Input Voltage Range	Absolute maximum	−3.5		+3.5	V
Output Characteristics					
Output Impedance			50		Ω
Output Voltage Range		−800		+800	mV
Output Offset Adjustment Range		−750		+650	mV
Environmental Characteristics					
Thermal dissipation			??	??	W
Operating Ambient Temperature	non-condensing	−20		+40	°C
Storage Temperature	non-condensing	−20		+90	°C
Weight			46		g

Please contact Sigtrona if you need further specs.

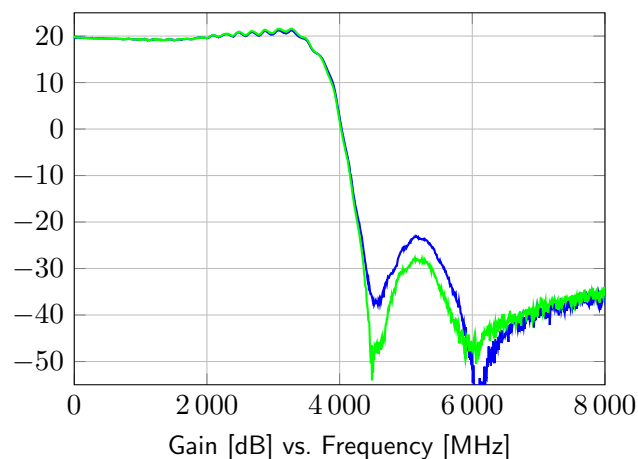
¹50 Ω terminated input to Out+ output.

1.2 Gain Graphs

Standard test conditions, unless otherwise specified: Output offset is set to 0 V, unused output terminated with $50\ \Omega$.



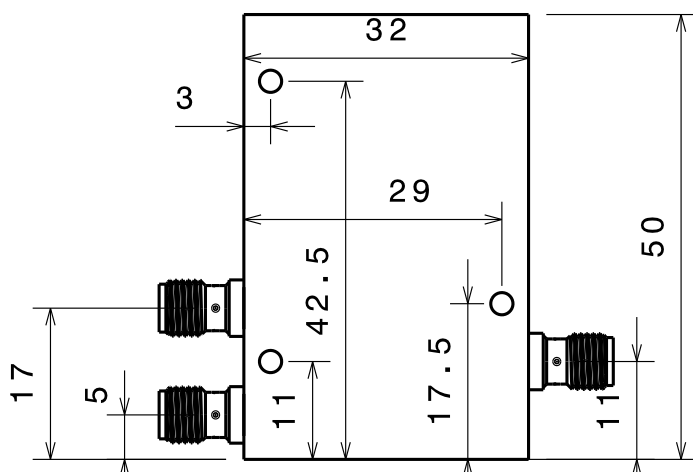
Gain at settings 34 dB, 28 dB, 20 dB, 12 dB, 4 dB (top to bottom)



Gain from DC to 8 GHz at setting 20 dB, Out+ (blue) and Out- (green)

1.3 Mechanical Dimensions

Bottom view



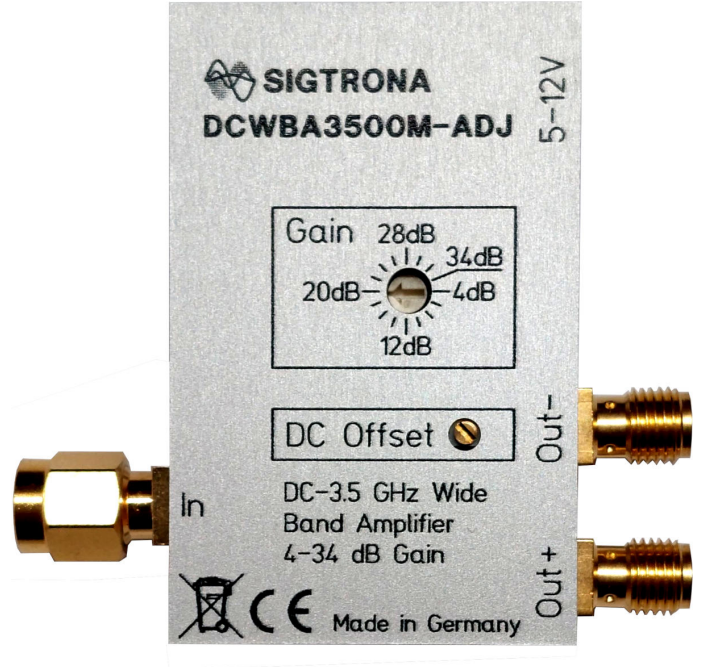
Bottom view with 3 mounting holes. All dimensions in mm. The drawing shows the SMA female input variant.

The DCWBA3500M-ADJ has 3 mount holes on the bottom for metric M 2.5 mm screws. These screws can penetrate 3 mm into the metal case.

2 Connections and Operation

The DCWBA3500M-ADJ features the following frontpanel elements:

- SMA male/female input (photo shows the male version; see variants) with internal $50\ \Omega$ termination.
- Two SMA female outputs, matched to $50\ \Omega$. These two outputs are complementary.
- USB-C style power connector. It does not support automatic voltage negotiation but you can supply any voltage from 5 to 12 V via the USB power pins.
- The DC offset can be adjusted by a multi-turn potentiometer over a range of at least $\pm 1\ \text{V}$ (flat screwdriver required for operation).
- The gain adjustment is provided by a 16-step rotary switch (flat screwdriver required for operation).



It is important to understand that the offset adjustment potentiometer changes the *output* offset. It cannot be used to remove a large offset present at the *input* into the amplifier. The total output voltage range given in the spec ($\pm 800\ \text{mV}$) refers to the total output voltage, i.e. offset plus amplified signal.